



# CHANGING DOCTOR BLADES

Eazi Fount

Canlines LTD

+44 151 420 7000

[www.canlines.co.uk](http://www.canlines.co.uk)

This guide is also downloadable at  
[www.canlines.co.uk/eazi-fount-information](http://www.canlines.co.uk/eazi-fount-information)

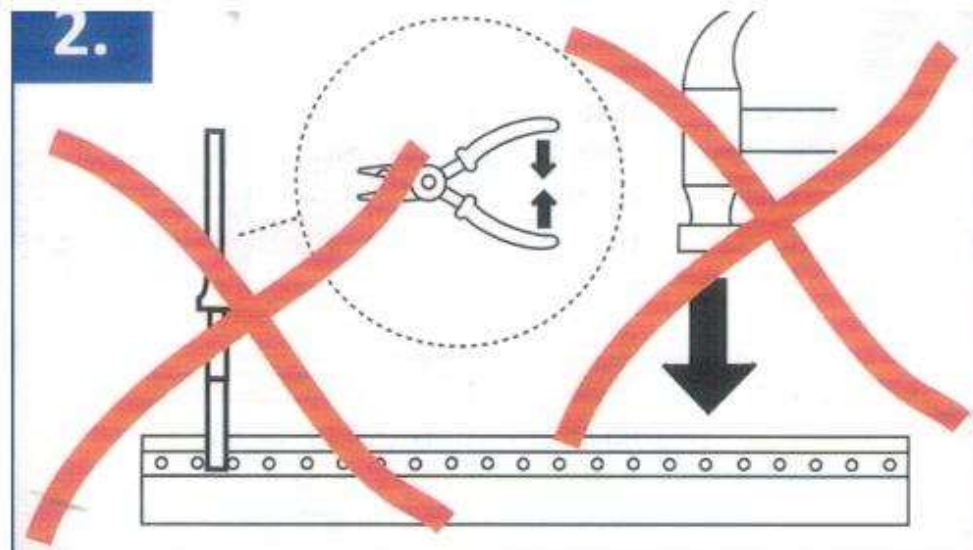


# 1: CAUTION!

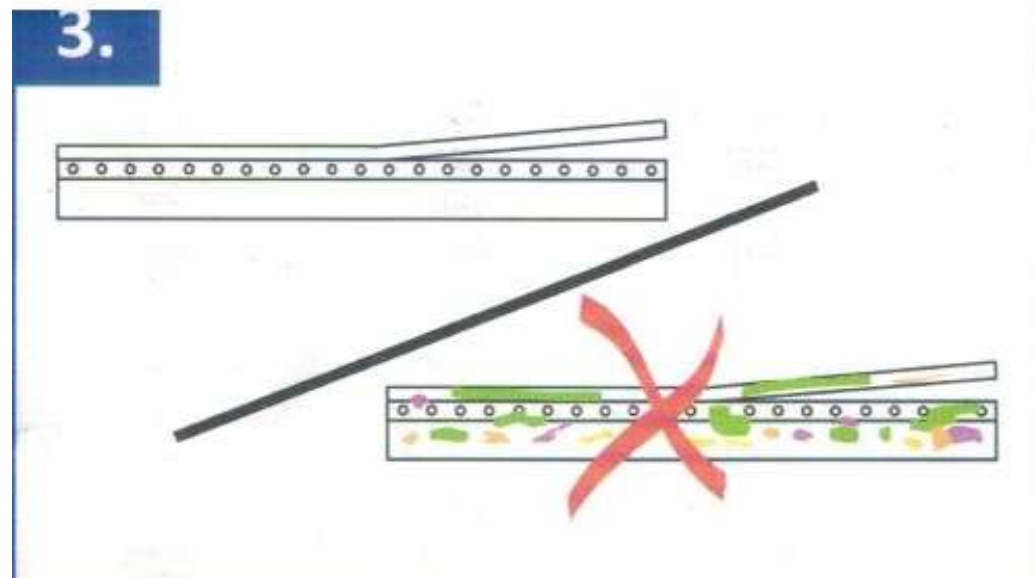
Doctor Blades are sensitive, high precision equipment. Always handle the strip-blade holder with extreme care.



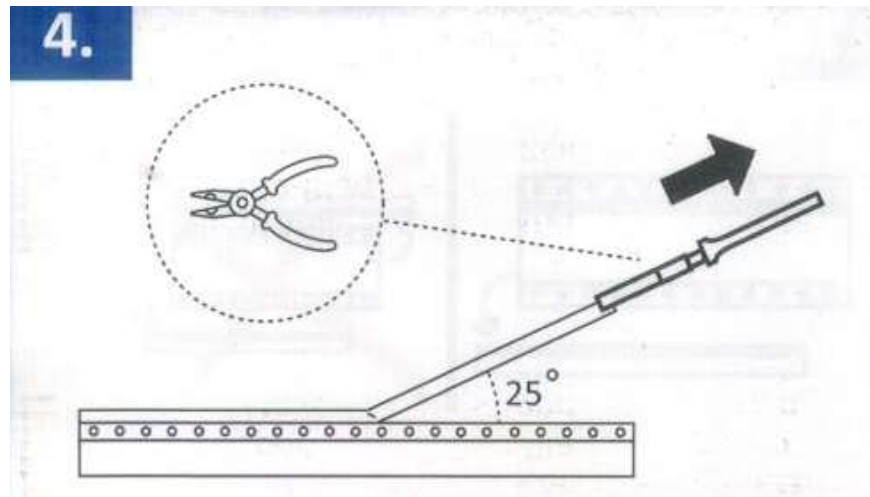
2: Never use force to straighten the Strip-Blade Holder, or try to adjust its clamp power.



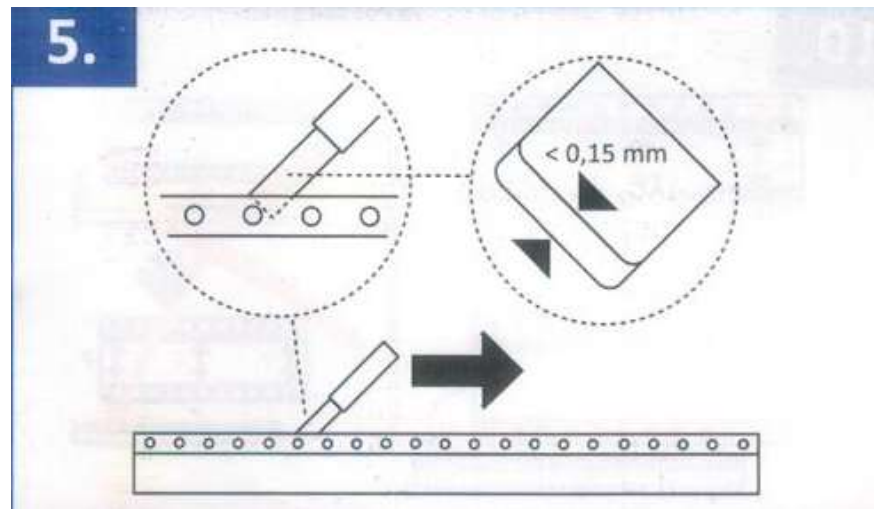
3: Clean the exterior of the Strip-Blade holder before extracting the doctor blade.



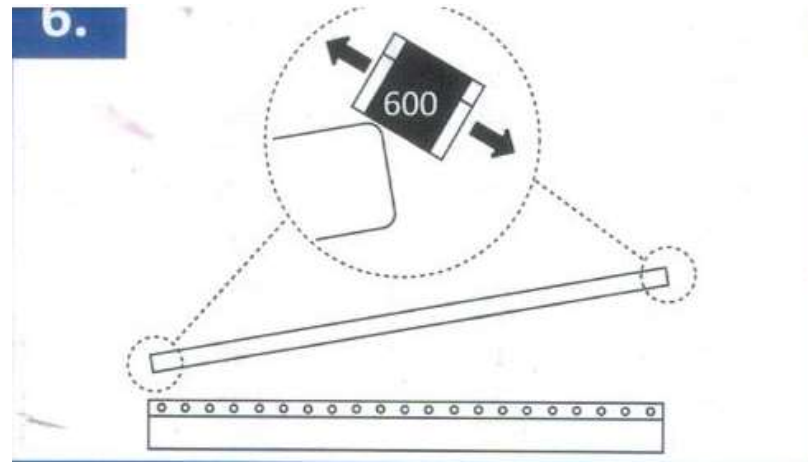
4: Use a pair of flat-nosed pliers to remove used doctor blades, as they are very sharp. Stretch the blade tightly when removing.



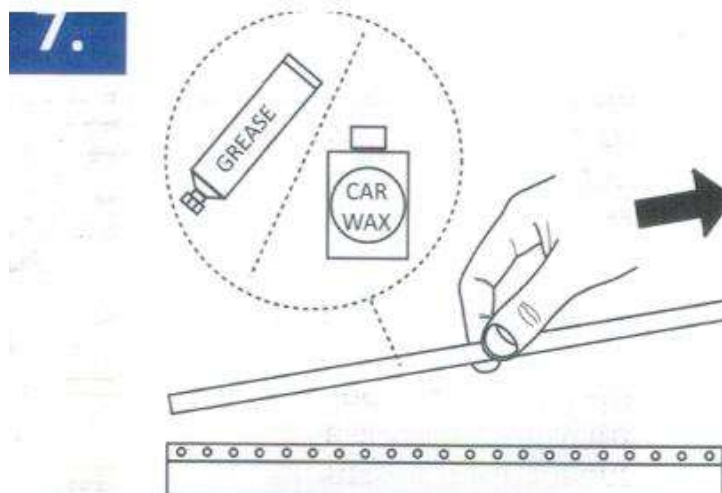
5: Never clean the inside of a Strip-Blade Holder with a tool thicker than 0.15mm. Doing so will reduce the holder's clamping power.



6: Cut/file off the corners of the doctor blade (ideally with 600 grain sandpaper) before inserting into the Strip-Blade Holder.

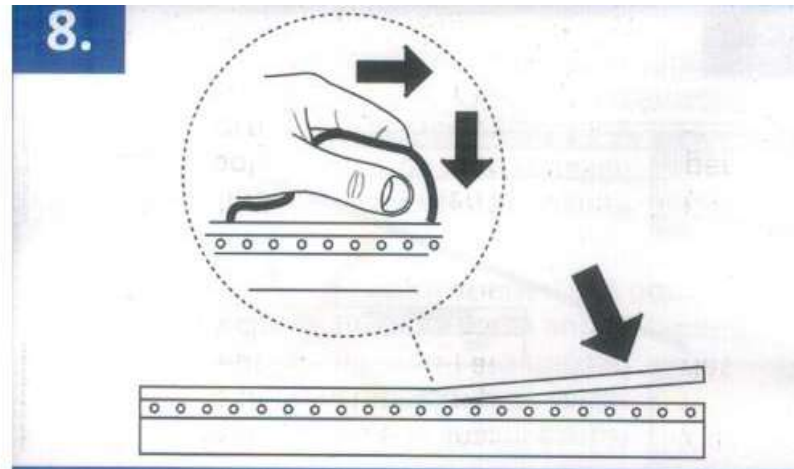


7: Cover the doctor blade with a thin layer of industrial grease before fitting it. This will simplify extraction.

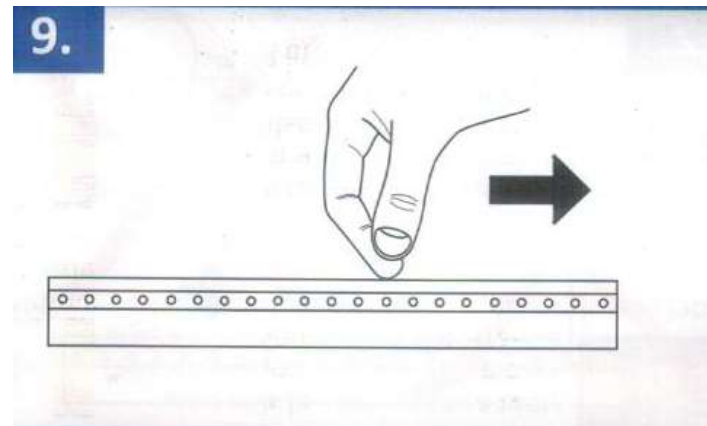




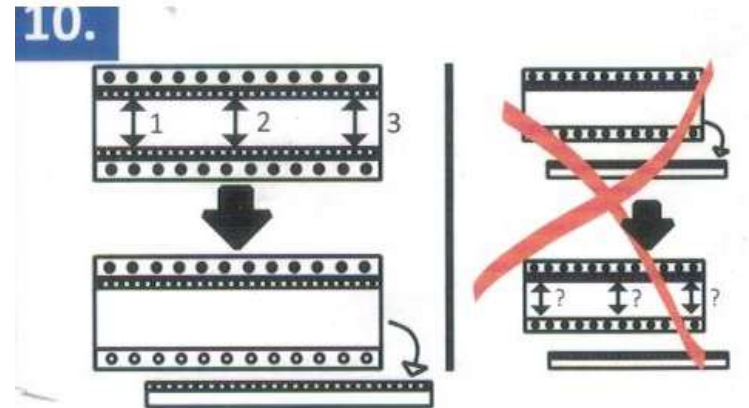
8: Push the new blade into the Strip-Blade Holder using a firmly rolled up rag to avoid harm.



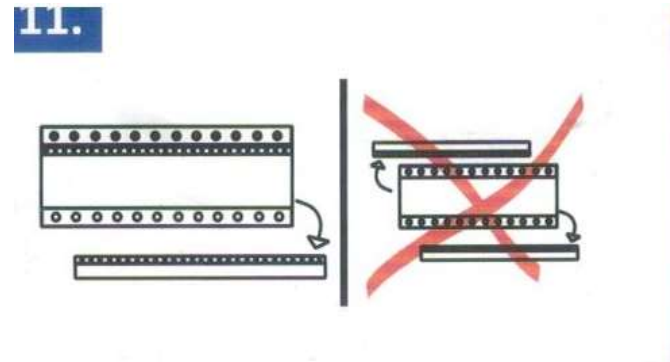
9: After fitting the new blade, run a fingernail down it to ensure there is no damage to the edge during the insertion



10: When changing Strip-Blade Holders, measure the distance in 3 places before removal.



11: When changing Strip-Blade Holders, do not have more than 1 Holder removed at any time. Doing so will make parallel insertion impossible.



Thank you for choosing Canlines LTD

